

UpRight
SB60

boom lifts

4WD telescopic

Working heights up to
66ft. (20.3m) telescopic boom

150° jib arc

52ft. 8ins. (16m) horizontal outreach

4WD, oscillating front axle

Excellent maneuverability in
rough terrain

45% (24°) gradeability

Smooth, user friendly
proportional controls:
lifting, telescoping, rotating

Responsive - 65 second
to 60ft. (18.3m)

180° hydraulic platform rotation

360° continuous rotation

Choice of 6ft. (1.83m) or
8ft. (2.44m) platforms

Four wheel brakes

Five year
structural warranty



Photograph shown CE model

specifications	SB60 4WD Diesel	SB60 4WD Dual Fuel
working height	66ft. (20.3m)*	66ft. (20.3m)*
platform height	60ft. (18.3m.)	60ft. (18.3m.)
horizontal outreach	52ft. 8ins. (16m.)	52ft. 8ins. (16m.)
jib length	8ft. (2.4m.)	8ft. (2.4m.)
jib arc	150°	140°
platform size - 6ft. (D)	39ins. (1.0m.) x 72ins. (1.83m.)	
platform capacity (max.)	500lbs. (227kg.)	500lbs. (227kg.)
platform rotation	180°	180°
turret rotation	continuous	continuous
stowed height	8ft. 6ins. (2.59m.)	8ft. 6ins. (2.59m.)
stowed length -operational (A)	36ft. 9ins. (11.21m.)	36ft. 9ins. (11.21m.)
stowed length -for transport (B)	29ft. 9ins. (9.06m.)	29ft. 9ins. (9.06m.)
stowed width (C)	7ft. 11.75ins. (2.43m.)	7ft. 11.75ins. (2.43m.)
inside turning radius	13ft. (3.96m.)	13ft. (3.96m.)
outside turning radius	22ft. 2ins. (6.75m.)	22ft. 2ins. (6.75m.)
tailswing - stowed	53ins. (1.3m.)	53ins. (1.3m.)
drive speed - boom stowed	4mph. (6.4km/h.)	4mph. (6.4km/h.)
drive speed - boom elevated	0.7mph. (1.2km/h.)	0.7mph. (1.2km/h.)
gradeability - 4WD	45% (24°)	45% (24°)
engine	perkins 704-30	GM 3.0L
tires US CE	air-filled poly-filled	air-filled poly-filled
ground clearance	11.5ins. (0.29m)	11.5ins. (0.29m)
toeboards	6ins. (152mm.)	6ins. (152mm.)
guardrail height	45ins. (1.14m.)	45ins. (1.14m.)
gross weight	23,700lbs. (10,750kg.)	23,600lbs. (10,705kg.)
cycle time to full height	65 secs.	65 secs.

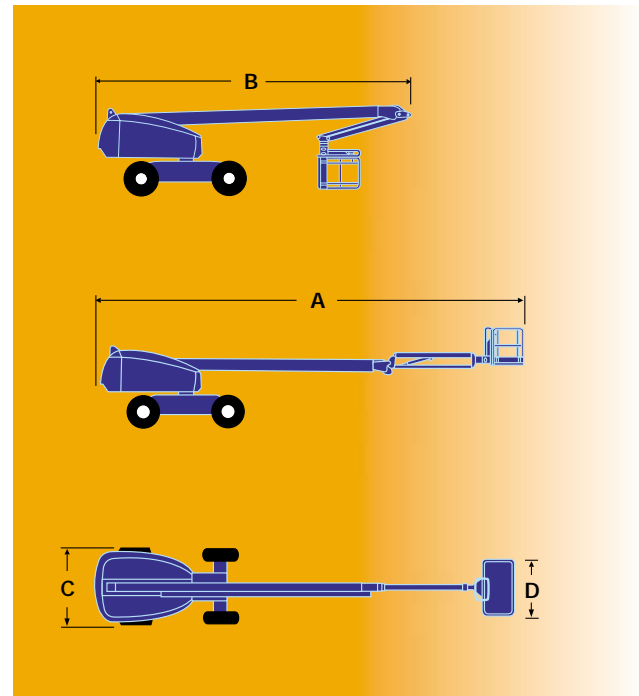
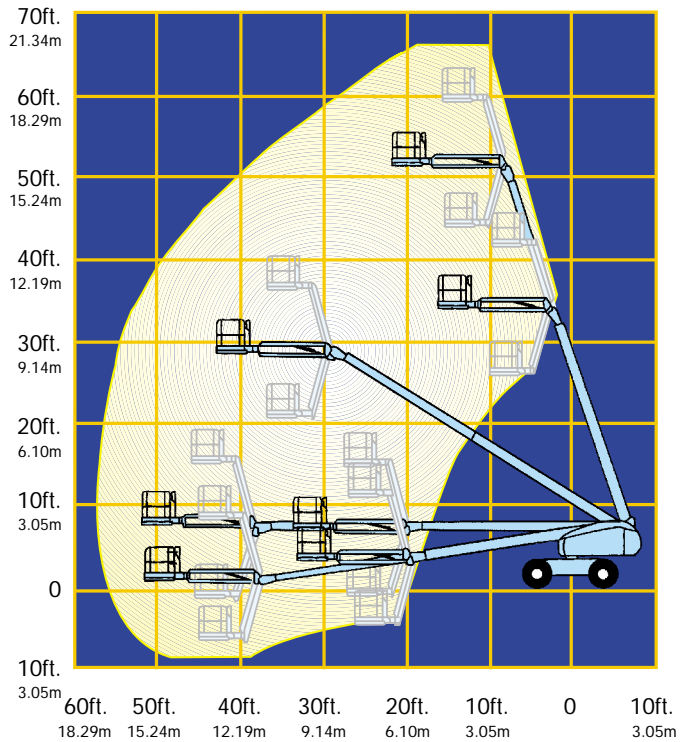
*Working height in the U.S. is 6 ft. above platform height. Metric working height is 2m above platform height.
Specifications subject to change without notice. Photos and diagrams in this brochure are for promotional purposes only.
Refer to appropriate UpRight Operators manual for detailed instructions on the proper use and maintenance of this equipment.

standard features

- 4WD oscillating front axle
- Proportional controls - lift, swing, telescope
- Power to platform
- Hour meter
- Horn
- 1 year parts/service
- 5 year structural warranty

options

- All motion alarm
- Flashing amber beacon
- Poly-filled tires (U.S.)
- Air-filled tires (CE)
- Optional 8ft. (2.4m.) platform
- Special paint colors
- Environmental green oil



Meets or exceeds applicable requirements of OSHA and ANSI A92.5 - 1992.
This product is available with the CE mark confirming compliance with all relevant European Machinery Directives

manufactured by
UpRight

UpRight

www.upright.com
e-mail: marketing@upright.com

GLOBAL PROVIDER OF ACCESS SOLUTIONS

MANUFACTURING

North America
Tel +1 (559) 662 3900
Fax +1 (559) 673 6184

Europe
Tel + 353 1 620 9300
Fax + 353 1 620 9301

SALES

USA / The Americas
Tel +1 (559) 662 3900
Fax +1 (559) 673 6184

Europe/Africa/M. East
Tel + 44 (0) 1952 685 200
Fax + 44 (0) 1952 685 255

France
Tel + 33 130 37 05 44
Fax + 33 130 37 63 68

Germany
Tel + 49 2103 98950
Fax + 49 2103 989549

Singapore
Tel + 65 6324 1322
Fax + 65 6225 5157

Australia
Tel + 61 2 9748 6200
Fax + 61 2 9748 6255

P. R. China
Tel + 86 21 63390190
Fax + 86 21 63390191

Japan
Tel + 81 3 5765 6841
Fax + 81 3 5765 6840